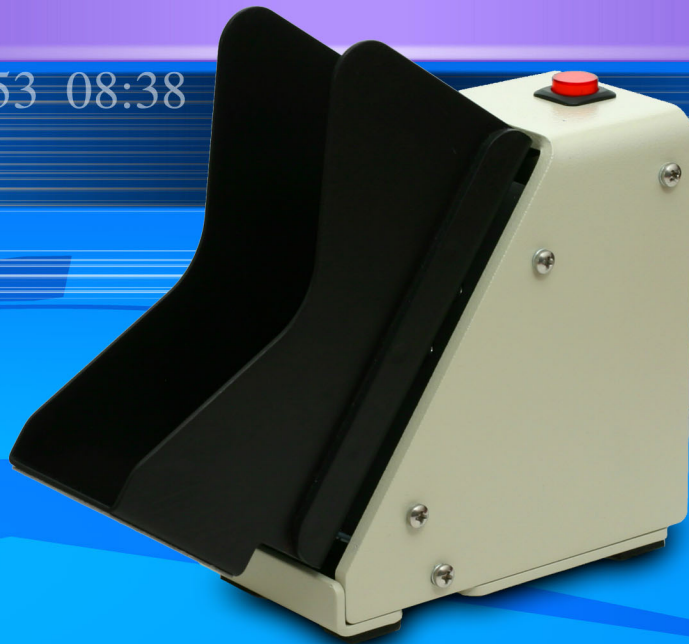


06:53 08:38

12:20



MJ-1000

Automatic Check Jogger

Features

- **Efficient and Reliable.** Takes less than 8 seconds to reliably jog a batch of checks.
- **Quiet operation.** Noise level is less than 53 dBA.
- **Very small footprint.** Less than a size of a personal check.
- 250 checks tray capacity.
- One-touch, automatic, timer controlled operation.
- Automatic or manual control of the jogging time.
- **UL certified.**

Dimensions:

Width: 2.8 Inches
Height: 6.4 Inches
Depth: 7.4 Inches

Weight: 3.6 lb

Power Adaptor:

Input: 100-240VAC,
50/60Hz, 0.5A
Output: 9VDC, 2.0A,
18W Max.

For Video Presentation, visit our web site <http://www.sheartech.net>

phone: 818-718-9024
web: <http://www.sheartech.net>
e-mail: info@sheartech.net
Chatsworth, CA 91311 U.S.A.

Shear Tech
innovations in document processing systems